

LOT 216 ONE BEDROOM TOWNHOUSES TWO BEDROOM OPTION ALSO AVAILABLE

Accommodation

- Hall
- Living and dining room
- Kitchen
- Laundry room
- Bedroom with dressing room and en-suite bathroom
- Private terrace and garden
- Garage (2 cars)

Specification

Kitchen

- Wall and base units – birch faced
- Work surfaces – brushed stainless steel
- Flooring – terracotta
- Bosch stainless steel appliances – including:
 - Microwave oven
 - Main oven with auto clean
 - Ceramic hob with touch control
 - Extractor fan
 - Refrigerator
 - Dishwasher

Bathrooms

- Bathroom suites by Catalano, comprising:
 - Bath
 - WC
 - Bidet
 - Double wash basin
 - Flooring – terracotta
 - Walls – blue marine hand made ceramic tiles

Miscellaneous

- Gas central heating
- Cable TV
- Security alarm
- Broadband Internet
- Pre-installation for air conditioning
- Communal swimming pool for each lot
- Automatic roof irrigation system
- Fireplace

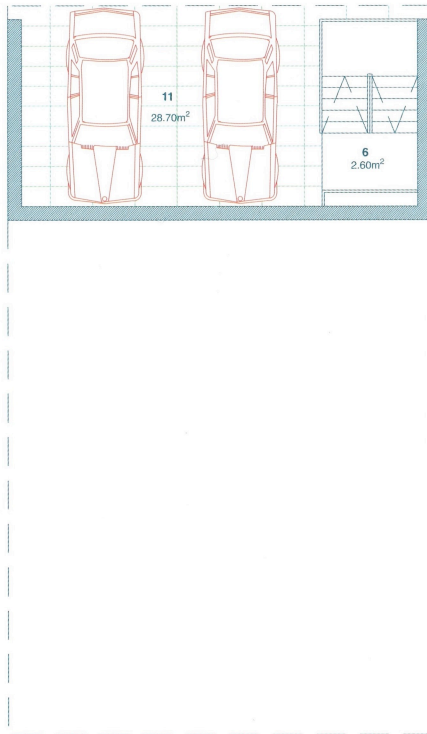


“The houses are open to the southern sun, through the glass walls in the living areas. The bedrooms and service areas will face north and will be lit through smaller openings set into the undulating walls, which will receive an alternative treatment insofar as colour is concerned.”

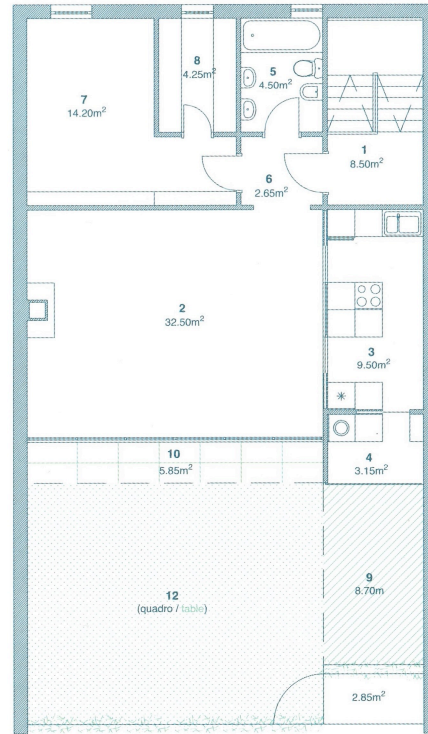
Luís Pessanha Moreira
Architect

Details and specification may be subject to variation and photography is indicative.

LOT 216 – ONE BEDROOM TOWNHOUSES
 TWO BEDROOM OPTION ALSO AVAILABLE



PLANTA DO PISO -1



PLANTA DO PISO 0

1. HALL
2. LIVING AND DINING ROOM
3. KITCHEN
4. LAUNDRY
5. BATHROOM
6. HALLWAY/STAIRS
7. BEDROOM
8. DRESSING ROOM
9. TERRACE
10. COVERED TERRACE
11. COVERED CAR PARK
12. PRIVATE GARDEN

